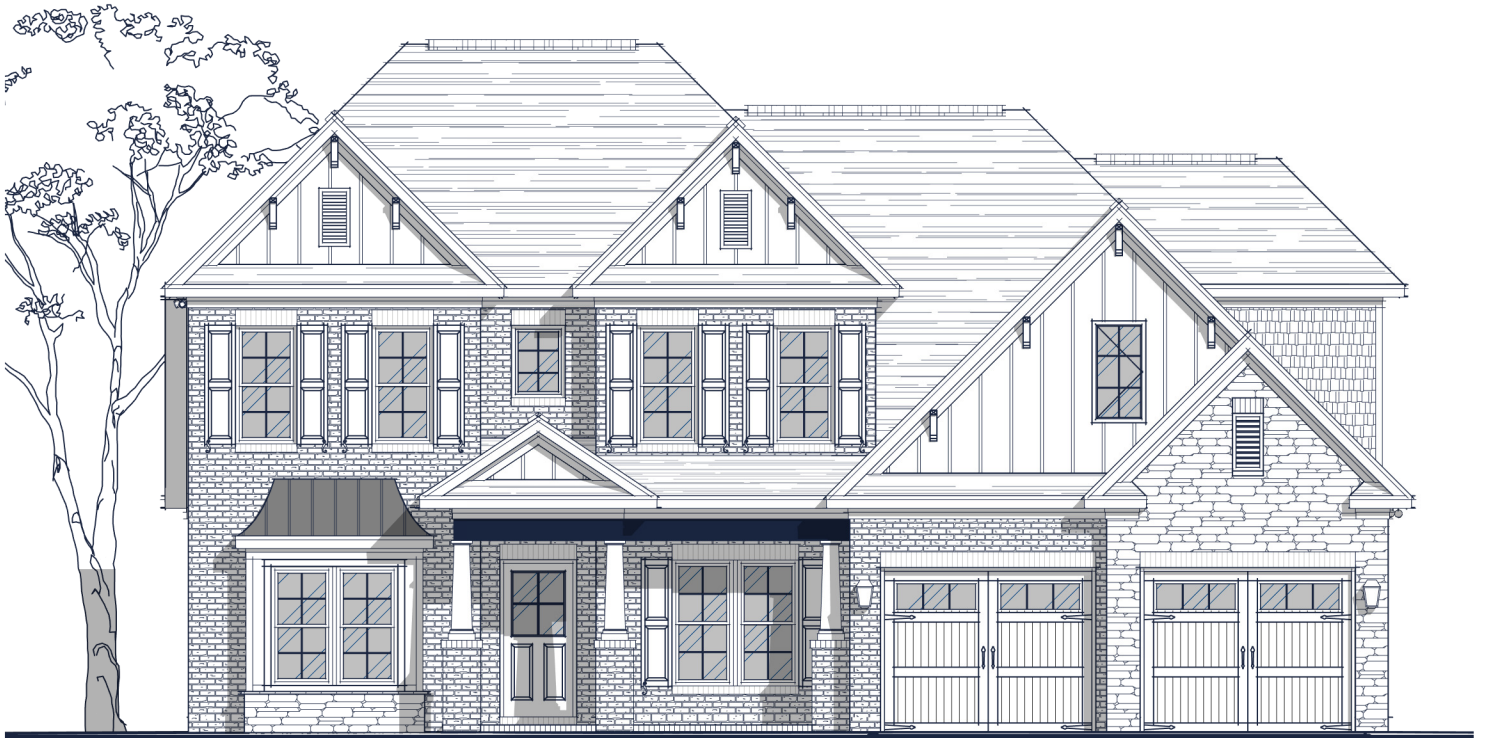




ISENHOUR
HOMES

FLOOR PLAN: ELLINGTON CLASSIC



Specs:

Bedrooms:	4
Bathrooms:	3.5
Square Footage:	3,338 Sq.Ft.
First Level:	2,051 Sq.Ft.
Second Level:	1,287 Sq.Ft.
Width:	52' - 0"
Depth:	55' - 8"

Options Shown:

- 1 Covered Porch
- 2 Screened in Porch
- 3 Sunroom (Adds 144 Sq.Ft.)
- 4 2'-0" Garage Extension (Adds 47 Sq.Ft.)
- 5 Side Load Garage
- 6 Sidewall Fireplace
- 7 Greatroom Triple Window
- 8 Greatroom Coffered Ceiling
- 9 Drop Zone Built-in
- 10 Laundry Luxury Layout
- 11 Bedroom-5 w/ Full Bath
- 12 Owners Bath Luxury Layout
- 13 Owners Suite Sitting Area
- 14 Bath-2 Jack-n-Jill (Adds 40 Sq.Ft.)
- 15 Bath-3 Double Vanity
- 16 Cabinets at Backside of Island
- 17 Butlers Pantry
- 18 Twin Window
- 19 French Doors

Watercolors, illustrations, and floor plans are for marketing purposes only and are subject to change at builder's discretion. Square footage is outside veneer and should be independently verified. This is not a legal document.
3/30/2023 4:33:40 PM

3411 Healy Drive, Suite A | **Winston-Salem, NC 27103** | 336-659-8211
4330 Southport Supply Rd, Suite 101 | **Southport, NC 28461** | 910-363-1620



IsenhourHomes.com

FLOOR PLAN: ELLINGTON CLASSIC

